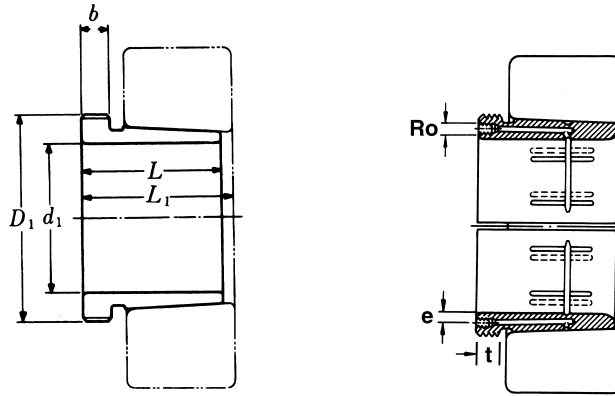


Hydraulic Withdrawal Sleeves



AOH 30

TAPER 1:12

| Hydraulic Withdrawal Part No. | d ₁ mm | L mm | L ₁ ¹⁾ mm | b mm | R _o | e mm | t mm | Thread ²⁾ D ₁ mm | Appropriate Withdrawal Nut No. | Weight (kgs) |
|-------------------------------|----------------------|---------|------------------------------------|---------|----------------|---------|---------|--|--------------------------------|-----------------|
| AOH 3032 | 150 | 77 | 82 | 16 | M6 | 4.2 | 8 | M 170 × 3 | AN 34 | 2.060 |
| AOH 3034 | 160 | 85 | 90 | 17 | M6 | 4.2 | 8 | M 180 × 3 | AN 36 | 2.430 |
| AOH 3036 | 170 | 92 | 98 | 17 | M6 | 4.2 | 8 | M 190 × 3 | AN 38 | 2.810 |
| AOH 3038 | 180 | 96 | 102 | 18 | M6 | 4.2 | 8 | Tr 205 × 4 | HNL 41 | 3.320 |
| AOH 3040 | 190 | 102 | 108 | 19 | M6 | 4.2 | 8 | Tr 215 × 4 | HNL 43 | 3.800 |
| AOH 3044 | 200 | 111 | 117 | 20 | G 1/8 | 8.5 | 12 | Tr 235 × 4 | HNL 47 | 7.400 |
| AOH 3048 | 220 | 116 | 123 | 21 | G 1/8 | 8.5 | 12 | Tr 260 × 4 | HNL 52 | 8.750 |
| AOH 3052 | 240 | 128 | 135 | 23 | G 1/8 | 8.5 | 12 | Tr 280 × 4 | HNL 56 | 10.700 |
| AOH 3056 | 260 | 131 | 139 | 24 | G 1/8 | 8.5 | 12 | Tr 300 × 4 | HNL 60 | 12.000 |
| AOH 3060 | 280 | 145 | 153 | 26 | G 1/8 | 8.5 | 12 | Tr 320 × 5 | HNL 64 | 14.400 |
| AOH 3064 | 300 | 149 | 157 | 27 | G 1/8 | 8.5 | 12 | Tr 345 × 5 | HNL 69 | 16.000 |
| AOH 3068 | 320 | 162 | 171 | 28 | G 1/8 | 8.5 | 12 | Tr 365 × 5 | HNL 73 | 19.500 |
| AOH 3072 | 340 | 167 | 176 | 30 | G 1/8 | 8.5 | 12 | Tr 385 × 5 | HNL 77 | 21.000 |
| AOH 3076 | 360 | 170 | 180 | 31 | G 1/8 | 8.5 | 12 | Tr 410 × 5 | HNL 82 | 23.200 |
| AOH 3080 | 380 | 183 | 193 | 33 | G 1/8 | 8.5 | 12 | Tr 430 × 5 | HNL 86 | 27.300 |
| AOH 3084 | 400 | 186 | 196 | 34 | G 1/8 | 8.5 | 12 | Tr 450 × 5 | HNL 90 | 29.000 |
| AOH 3088 | 420 | 194 | 205 | 35 | G 1/8 | 8.5 | 12 | Tr 470 × 5 | HNL 94 | 32.000 |
| AOH 3092 | 440 | 202 | 213 | 37 | G 1/8 | 8.5 | 12 | Tr 490 × 5 | HNL 98 | 35.200 |
| AOH 3096 | 460 | 205 | 217 | 38 | G 1/8 | 8.5 | 12 | Tr 520 × 6 | HNL 104 | 39.200 |
| AOH 30/500 | 480 | 209 | 221 | 40 | G 1/8 | 8.5 | 12 | Tr 540 × 6 | HNL 108 | 42.500 |

Note :

- 1) Dimension L₁ decreases as the Hydraulic withdrawal sleeve is driven in during mouting 。
L₁尺寸隨油壓退卸套鎖緊而變小。
- 2) M means metric thread , Tr means 30°, trapezoid thread and the digits are outside diameter of thread and pitch 。
M 代表公制螺紋， Tr 代表 30°， 梯形螺紋； 數字代表螺紋外徑及螺距。