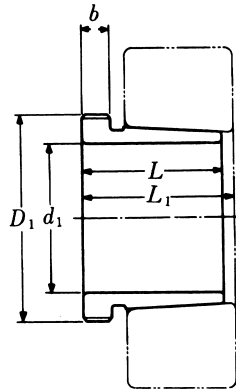


Withdrawal Sleeves



AH 32

TAPER 1:12

Withdrawal Part No.	d ₁ mm	L mm	L ₁ ¹⁾ mm	b mm	Thread ²⁾ D ₁ mm	Appropriate Withdrawal Nut No.	Weight (kgs)
AHX 3218	85	63	67	10	M 100 × 2	AN 20	0.576
AHX 3220	95	73	77	11	M 110 × 2	AN 22	0.767
AHX 3222	105	82	86	11	M 125 × 2	AN 25	1.040
AHX 3224	115	90	94	13	M 135 × 2	AN 27	1.300
AHX 3226	125	98	102	15	M 145 × 2	AN 29	1.580
AHX 3228	135	104	109	15	M 155 × 3	AN 31	1.840
AHX 3230	145	114	119	17	M 165 × 3	AN 33	2.220
AH 3232	150	124	130	20	M 180 × 3	AN 36	4.080
AH 3234	160	134	140	24	M 190 × 3	AN 38	4.800
AH 3236	170	140	146	25	M 200 × 3	AN 40	5.320
AH 3238	180	145	152	25	Tr 210 × 4	HN 42	5.900
AH 3240	190	153	160	24	Tr 220 × 4	HN 44	6.680
AH 3260	280	228	236	34	Tr 330 × 5	HN 66	26.000
AH 3264	300	246	254	36	Tr 350 × 5	HN 70	30.600
AH 3268	320	264	273	38	Tr 370 × 5	HN 74	35.800
AH 3272	340	274	283	40	Tr 400 × 5	HN 80	41.600
AH 3276	360	284	294	42	Tr 420 × 5	HN 84	46.300
AH 3280	380	302	312	44	Tr 440 × 5	HN 88	52.500
AH 3284	400	321	331	46	Tr 460 × 5	HN 92	59.700
AHX 3288	420	330	341	48	Tr 480 × 5	HN 96	64.800
AHX 3292	440	349	360	50	Tr 510 × 6	HN 102	75.200
AHX 3296	460	364	376	52	Tr 530 × 6	HN 106	83.100
AHX 32/500	480	393	405	54	Tr 550 × 6	HN 110	94.700

Note :

1) Dimension L₁ decreases as the withdrawal sleeve is driven in during mouting .

L₁尺寸隨退卸套鎖緊而變小。

2) M means metric thread , Tr means 30° , trapezoid thread and the digits are outside diameter of thread and pitch . M 代表公制螺紋 , Tr 代表 30° , 梯形螺紋 ; 數字代表螺紋外徑及螺距。