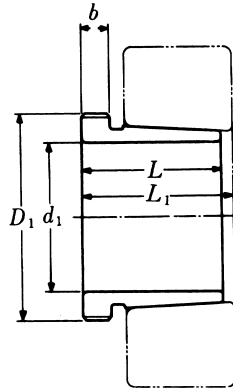


Withdrawal Sleeves



AH 240

TAPER 1:30

Withdrawal Part No.	d ₁ mm	L mm	L ₁ ¹⁾ mm	b mm	Thread ²⁾ D ₁ mm	Appropriate Withdrawal Nut No.	Weight (kgs)
AH 24024	115	73	82	13	M 125 × 2	AN 25	0.650
AH 24026	125	83	93	14	M 135 × 2	AN 27	0.840
AH 24028	135	83	93	14	M 145 × 2	AN 29	0.910
AH 24030	145	90	101	15	M 155 × 3	AN 31	1.040
AH 24032	150	95	106	15	M 170 × 3	AN 34	2.330
AH 24034	160	106	117	16	M 180 × 3	AN 36	2.800
AH 24036	170	116	127	16	M 190 × 3	AN 38	3.100
AH 24038	180	118	131	18	M 200 × 3	AN 40	3.500
AH 24040	190	127	140	18	Tr 210 × 4	HN 42	3.930
AH 24044	200	138	152	18	Tr 230 × 4	HN 46	8.250
AH 24048	220	138	153	20	Tr 250 × 4	HN 50	9.000
AH 24052	240	162	178	20	Tr 270 × 4	HN 54	11.800
AH 24056	260	162	179	22	Tr 290 × 4	HN 58	12.800
AH 24060	280	184	202	24	Tr 310 × 5	HN 62	15.500
AH 24064	300	184	202	24	Tr 330 × 5	HN 66	16.600
AH 24068	320	206	225	26	Tr 360 × 5	HNL 72	21.700
AH 24072	340	206	226	26	Tr 380 × 5	HNL 76	22.700
AH 24076	360	208	228	28	Tr 400 × 5	HNL 80	23.700
AH 24080	380	228	248	28	Tr 420 × 5	HNL 84	27.100
AH 24084	400	230	252	30	Tr 440 × 5	HNL 88	29.000
AH 24088	420	242	264	30	Tr 460 × 5	HNL 92	31.900
AH 24092	440	250	273	32	Tr 480 × 5	HNL 96	34.700
AH 24096	460	250	273	32	Tr 500 × 5	HNL 100	36.600
AH 240/500	480	253	276	35	Tr 520 × 6	HNL 104	39.500

Note :

- 1) Dimension L₁ decreases as the withdrawal sleeve is driven in during mouting。
L₁尺寸隨退卸套鎖緊而變小。
- 2) M means metric thread , Tr means 30°, trapezoid thread and the digits are outside diameter of thread and pitch。
M 代表公制螺紋, Tr 代表 30°, 梯形螺紋；數字代表螺紋外徑及螺距。